

Drum Set

# Hora Di Marrakchi

Roby Lakatos

Arr. O. Rybak

Moderato ..

4 simile **1**

13

17 **2** Allegro vivace ..

21 **3**

24

26

29 **4**

32

2

Drum Set

35

37 **5** Moderato ..

39 simile

4

45

8

**6**

12

50

16

56

20

62

65 **7**

67

70

73 **8**

Musical staff for measure 73, marked *p*. It features a series of eighth notes with stems pointing down, grouped in pairs and then in groups of four. The notes are on the G4 line and A4 space. There are 'x' marks above the notes in the second, third, and fourth measures, indicating cymbal accents.

Musical staff for measure 76, continuing the rhythmic pattern from measure 73 with eighth notes and stems pointing down, grouped in pairs and then in groups of four.

Musical staff for measure 79, continuing the rhythmic pattern. It includes a double bar line and a fermata over the final note.

81 **9** Moderato ..

Musical staff for measure 81, marked *Moderato*. It features a series of eighth notes with stems pointing down, grouped in pairs and then in groups of four. There are 'x' marks above the notes in the first measure, indicating cymbal accents.

83 simile

4

Musical staff for measure 83, consisting of six measures of rests, each marked with a slash and a vertical line (/:).

89 8

**10**

12

Musical staff for measure 89, consisting of six measures of rests, each marked with a slash and a vertical line (/:).

Musical staff for measure 95, starting with a rest marked with a slash and a vertical line (/:). It then features eighth notes with stems pointing down, grouped in pairs and then in groups of four. There are 'x' marks above the notes in the first two measures, indicating cymbal accents.

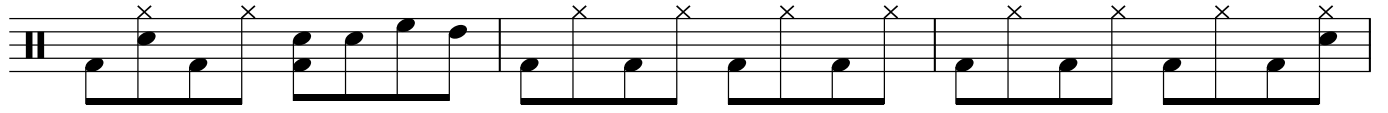
Musical staff for measure 97, continuing the rhythmic pattern with eighth notes and stems pointing down, grouped in pairs and then in groups of four. There are 'x' marks above the notes in the first measure, indicating cymbal accents.

Musical staff for measure 99, continuing the rhythmic pattern with eighth notes and stems pointing down, grouped in pairs and then in groups of four. There are 'x' marks above the notes in the first measure, indicating cymbal accents.

101 **11** Allegro vivace ..

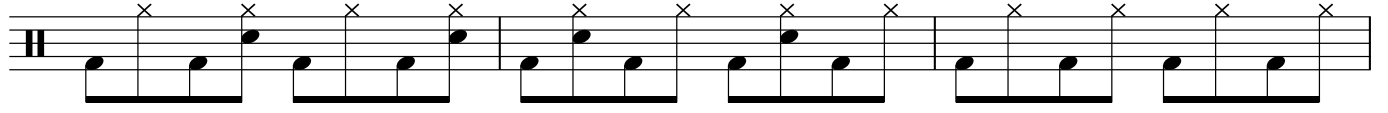
Musical staff for measure 101, marked *Allegro vivace*. It features a series of eighth notes with stems pointing down, grouped in pairs and then in groups of four. There are 'x' marks above the notes in the first measure, indicating cymbal accents.

104



107

12



110

